

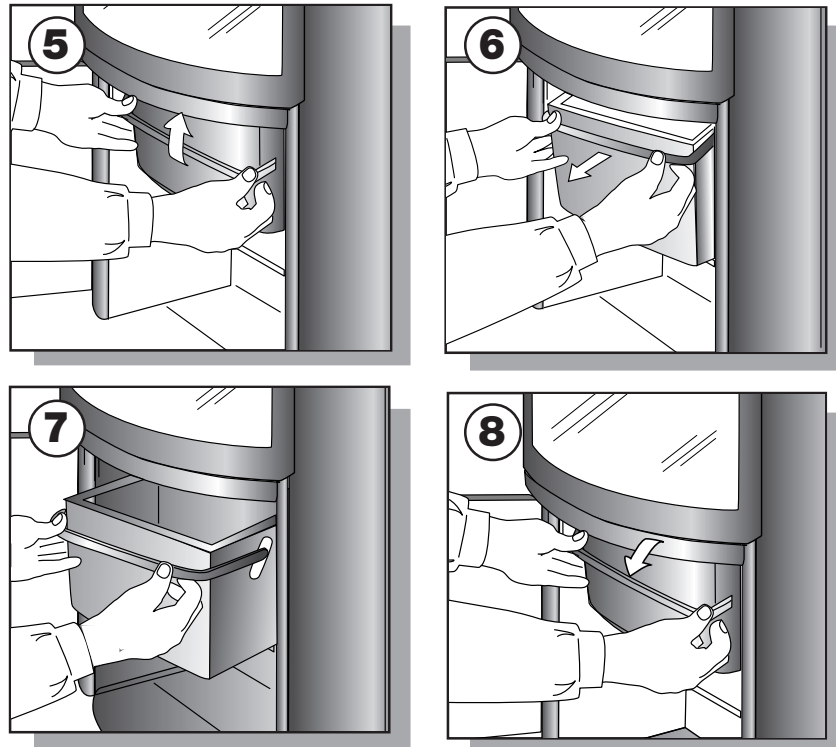
Maintenance

The surface of the stove has been treated with heat-resistant paint. The stove should be cleaned with a damp cloth. Any damage to the surface in the form of chips or scratches can be repaired using touch-up paint, which is available in spray cans. If the stove has become grey in colour due to overheating, touch-up paint of this kind can be used to repaint the stove entirely. However, in this case, the stove should be dismantled and the surface treatment should be performed outdoors or in a purpose-built room.

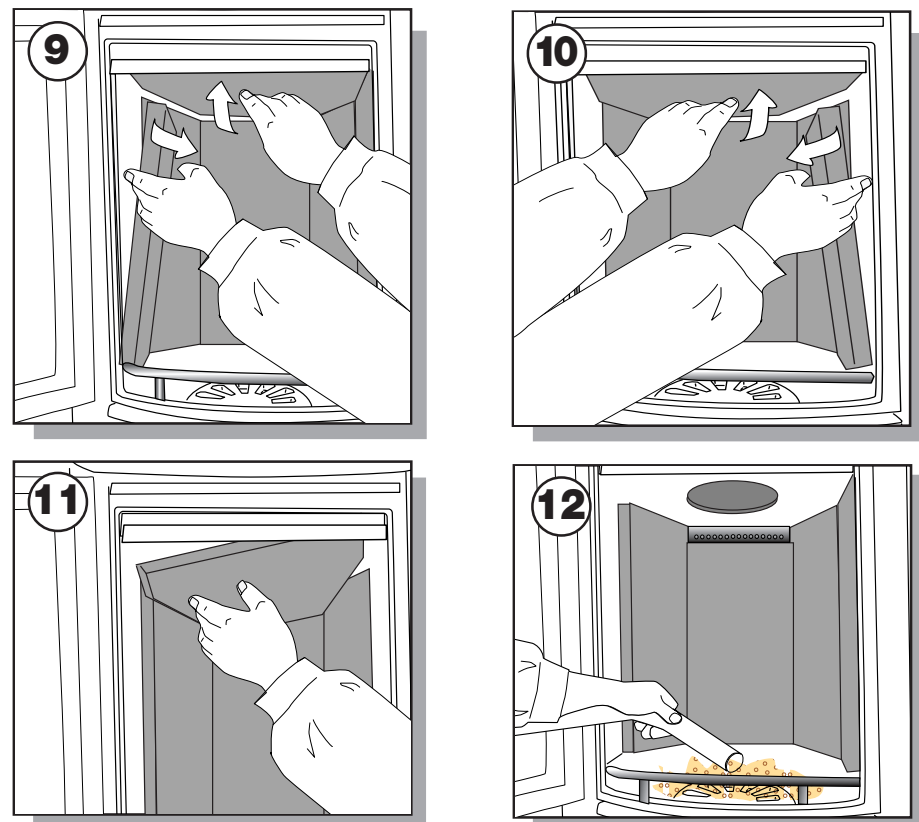
Cleaning the glass

Incorrect firing, for example using wet wood, can result in the viewing window becoming covered in soot. This soot can be easily and effectively removed by using proprietary stove glass cleaner.

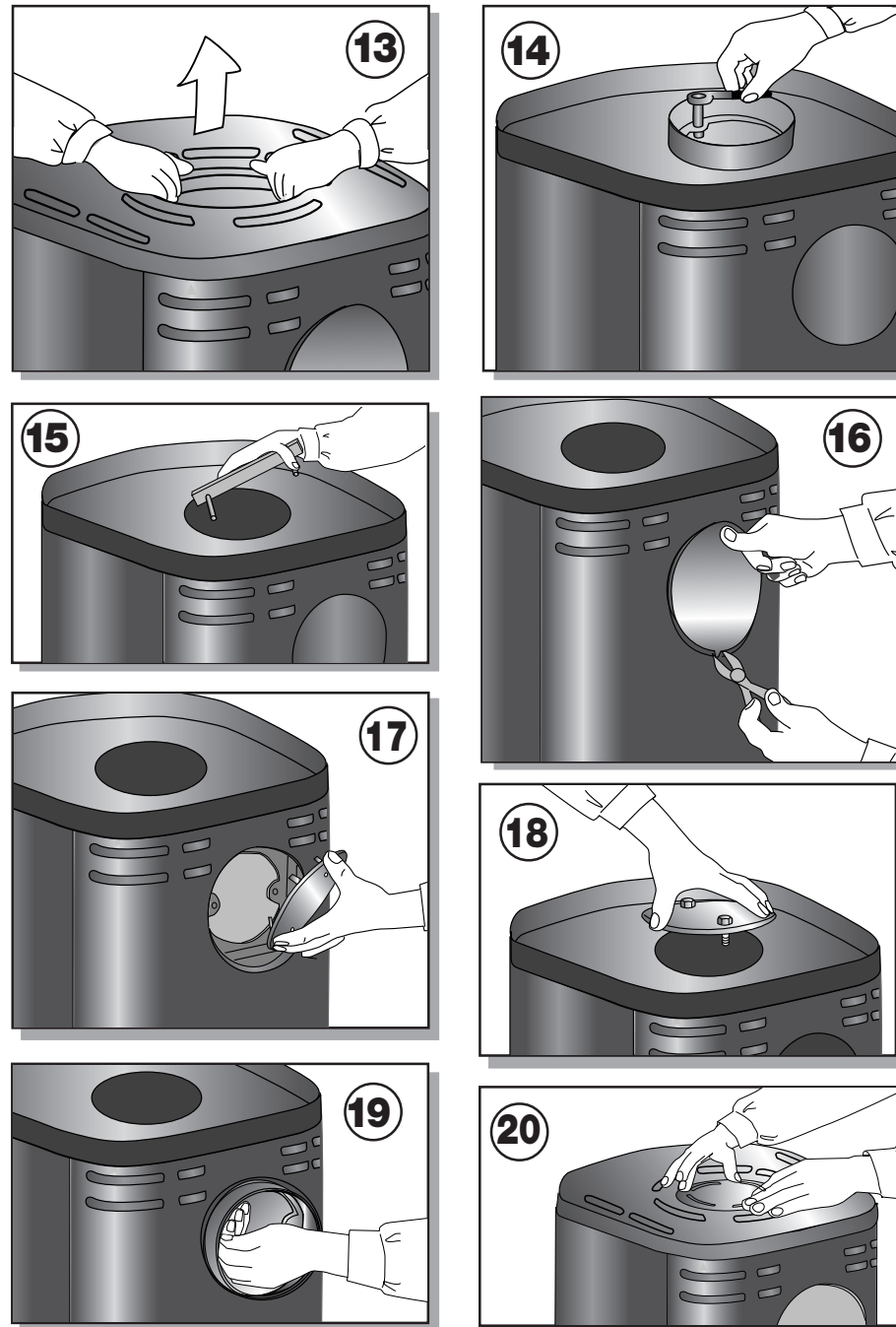
Emptying the ash pan, fig. 5-8



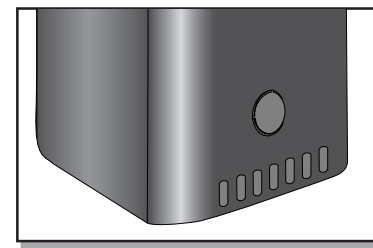
Cleaning after sweeping the chimney and replacing the stones. Fig 9-11



Changing to back smoke outlet Fig. 13-20



Warning
Any unauthorised modification of the stove and any use of non-original spares will void the guarantee.



The stove is prepared for a fresh air intake.

Guarantee

The model Scan-Line 500 stoves are subjected to stringent quality control procedures both throughout the production process and immediately before delivery to the dealer.

Therefore, the stoves are guaranteed against defects in manufacturing FOR FIVE YEARS.

This guarantee does not cover: Wearing parts/fragile parts such as:

- The fire-proof bricks in the combustion chamber.
- The smoke baffle.
- The glass. • The sealing rope. • The grate frame.

Damage resulting from incorrect use Transport costs in connection with repairs carried out under guarantee Installation/disassembly in connection with repairs carried out under guarantee Should you have cause to make a complaint, please quote the number on the certificate of guarantee.

OPERATING INSTRUCTIONS

Scan Line 500



Heta



HETA A/S
DK-LEMVIG

04/10-2005 - 0037-1156

Congratulations on your new stove. We are sure that you will be happy with your investment, especially if you follow the advice and instructions we have put together in these operating instructions.

The Scan-line 500 has been approved according to the EN 13240 / NS 3058. Approval means that consumers can be sure, that the stove meets a range of specifications and requirements intended to ensure that the materials used are of good quality, that the stove does not adversely affect the environment, and that it is economical to use.

With your new stove you should have received the following:

- a. Operating instructions
- b. Guarantee slip
- c. A stove glove
- d. Ashpan cover

INSTALLATION INSTRUCTIONS:

Safety clearances

Stoves must always be installed in line with national and, if applicable, local regulations. It is important to abide by local regulations regarding setting up chimneys and connection to same. Therefore, always consult your local chimney sweep before installation, as you are personally responsible for ensuring that the applicable regulations have been met.

Distance regulations

A difference applies to installation next to flammable and non-flammable walls. If the wall is made of non-flammable material the stove can, in principle, be placed flush against it. However, we recommend leaving a gap of at least 5 cm to facilitate cleaning behind the stove. **The minimum distances to flammable material are stated on the boiler plate and are listed in the table on page 4.**

Important

Da en brændeovn bliver varm under fyring (mere end 90°C), skal der udvises en fornøden forsigtighed. Børn bør undgå kontakt med ovnen. Der må ikke opbevares brandbart materiale i rummet under askeskuffen.

IMPORTANT

1. Make sure there is adequate provision to sweep the chimney.
2. Make sure there is adequate ventilation to the room.
3. Please note that any extraction fans operating in the same room as the wood-burning stove can reduce the chimney draft – which may have an adverse effect on stove combustion properties. In addition, this may cause smoke to be emitted from the stove when the firing door is opened.
4. It must not be possible to cover any air vents.

The floor

It is essential to ensure that the floor surface can actually bear the weight of the stove and a top-mounted steel chimney, if applicable. The stove must stand on a nonflammable surface such as a steel floor plate or a brick or tile floor. The size of the nonflammable surface used to cover the floor area must match national and local regulations.

The chimney connection

The chimney opening must follow national and local regulations. However, the area of the opening should never be less than 175 cm², which corresponds to a diameter of 150 mm. If a damper is fitted in the flue gas pipe, there must always be at least 20 cm² of free passage, even when the damper is in its “closed” position. If local regulations permit, two contained fireplaces can be connected to the same chimney. However, you must abide by local regulations regarding the distance between the two connections. Wood-burning stoves must never be connected to chimneys that are also linked to a gasfired heater. An efficient stove makes high demand on chimney properties – so always have your local chimney sweep evaluate your chimney.

Connection to a brick chimney

Brick a thimble into the chimney and seat the flue gas pipe in this. The thimble and flue gas pipe must not penetrate the chimney opening itself, but must be flush with the inside of the chimney duct. Joints between brickwork, the thimble and flue gas pipe must be sealed with fireproof material and/or beading

Connection to a steel chimney

When fitting a connection from a top-output stove directly to a steel chimney, we recommend fitting the chimney tube inside the flue gas spigot so that any soot and condensation drops into the stove itself rather than collecting on the exterior surface of the stove. Changing smoke outlet from top-mounted to rear-mounted (see fig. 8–15 on page 6).

For connections to chimneys that are run through ceilings, all national and local regulations regarding distance to flammable material must be followed. It is important that the chimney is fitted with roof support so that the top panel of the stove is not required to bear the entire weight of the chimney (excessive weight may damage the stove).

Draft conditions

Poor draft may result in smoke being emitted from the stove when the door is opened. The minimum chimney draft to ensure satisfactory combustion in stoves of this kind is 12 PA. However, there will still be a risk of smoke emission if the firing door is opened during powerful firing. The flue gas temperature at nominal output is 257°C when expelled to an exterior temperature of 20°C. The flue gas mass flow is 5.4 g/sec. The chimney draft is generated by the difference between the high temperature of the chimney and the low temperature of the fresh air. The length and insulation of the chimney, wind and weather conditions also have an effect on the ability of the chimney to generate appropriate under-pressure.

Reduced draft can occur when:

- The difference in temperature is too small – due to insufficient chimney insulation, for example.
- The outdoor temperature is too high – in summer, for example.
- No wind is blowing. - The chimney is too low and sheltered. - The chimney contains false air.
- The chimney and flue gas pipe are blocked.
- The house is too airtight (i.e. when there is an insufficient supply of fresh air).

Good draft occurs when:

- The difference in temperature between the chimney and outdoor air is high.
- The weather is fine. - The wind is blowing strongly.
- The chimney is of the correct height: at least 4.00 m above the stove and free of the roof ridge.

Instructions for use:

First firing

The stove has been treated with a heat-resistant coating which hardens at a temperature of approximately 250 °C. This hardening process causes the production of smoke and malodorous fumes, so the room must be very well ventilated.

During the first firing, which should be carried out using approximately 1,6 kg. of wood, the stoking door must be left slightly open and must not be closed until the stove is cold. This is to prevent the sealing rope sticking to the stove.

Fuel

Your new stove is EN approved for firing with wood fuel. You must therefore only burn clean, dry wood in your stove. Never use your stove to burn driftwood, as this may contain a lot of salt which can damage both the stove and the chimney. Similarly, you must not fire your stove with refuse, painted wood, pressure-impregnated wood or chipboard, as these materials can emit poisonous fumes and smoke. Correct firing using well seasoned wood provides optimal heat output and maximum economy. At the same time, correct firing prevents environmental damage in the form of smoke and emissions and also reduces the risk of chimney fires. If the wood is wet and inadequately seasoned, a large proportion of the energy in the fuel will be used to vaporise the water, and this will all disappear up the chimney. Thus it is important to use dry, well seasoned wood, i.e. wood with a moisture content of no more than 18%. This is achieved by storing the wood for 1–2 years before use. Pieces of firewood with a diameter of more than 10 cm should be split before storing. The pieces of firewood should be of an appropriate length (approx. 25–30 cm) so that they can lie flat on the bed of embers. If you store your wood outdoors, it is best to cover it.

Examples of fuel values of different woods

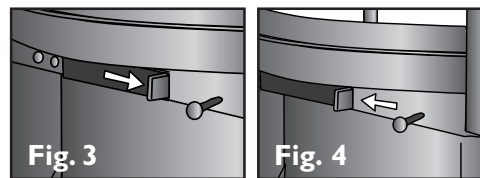
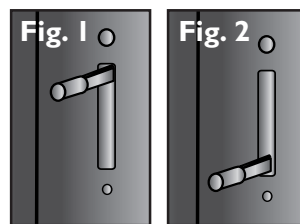
Fuel type / number of cubic metres per 1,000 litres of oil

Oak / 7.0	Beech / 7.0	Ash / 7.2	Birch / 8.0	Elm / 8.9	Common spruce /10.4
-----------	-------------	-----------	-------------	-----------	---------------------

Chimney fires

In the event of a chimney fire – which often results from incorrect operation or protracted firing with moist wood – close the door and shut off the secondary/start-up air supply to smother the fire. Call the fire department.

Lighting and combustion



To open the flow of secondary air, use the operating handle at the back of the side panel. The secondary airflow is completely open in top position, fig. 1. Shut off the secondary airflow gradually by lowering the handle. The supply is completely shut off when the handle is at its bottom position, fig. 2. To open the start-up airflow for the stove, pull the handle on the start-up mechanism as far to the right-hand side of the stove (as seen from the front) as possible. See fig. 3. To close the start-up airflow for the stove, push the handle on the start-up mechanism as far to the left-hand side of the stove (as seen from the front) as possible. See fig. 4. To regulate the volume of combustion air (secondary air), position the operating handle at the back of the side panel between closed (fig. 2) and completely open (fig. 1).

Lighting

To ignite the fuel, use fire lighters, small paraffin ignition bags or small pieces of wood placed on the bottom grate. Place larger pieces of wood on top of this kindling material, at right angles to the firing, doors. Completely open the secondary air supply and leave the firing door ajar – i.e. approx. 1 cm open. Once the fire has taken a good hold of the fuel and the chimney has heated up (after about 10 min) close the firing door. We recommend that you burn the entire first firing with the secondary air supply fully open to make sure that the chimney is thoroughly heated.

Refiring

You should normally refire the stove while there is still a good layer of embers. Distribute the embers across the bottom grate, place pieces of fuel (max. 2 kg) on the embers in a single layer perpendicular to the firing opening. Close the firing door and fully open the start-up mechanism. The wood will then ignite very quickly – i.e. in 30 seconds or 1 minute. When the wood is burning with a steady flame, close the start-up mechanism. Then adjust the secondary airflow to the level required. For nominal operation (5 kW), the secondary air supply should be approx. 70% open. When firing, take care not to place the pieces of fuel too closely together, as this will result in poor combustion and insufficient exploitation of the fuel. Please note that the start-up mechanism must not remain open during normal operation of the stove, as this may lead to overheating. It must only be used until the fuel is burning with a steady flame.

Reduceret afbrænding

The stove is well-suited to intermittent use. If you wish to operate the stove with reduced output, simply insert smaller volumes of wood at each firing, and apply a lower airflow. However, remember that the secondary combustion air supply must never be shut off completely during firing. It is important to keep a good bed of embers. Gentle heat is released when the fire settles - i.e. when the wood no longer generates flames and has been converted to glowing embers.

Optimal firing

To achieve optimal firing and the highest possible effect, it is important to make sure that the air supply is used correctly. As a general rule, the secondary air is to be used to control the fire to ignite the flue gases. This produces a high effect and keeps the glass panel completely clear of soot as the secondary air “washes” down over it. Please note that the stove will, naturally, produce soot if both the start-up mechanism and secondary air intakes are closed completely. This will prevent oxygen from being drawn into the stove, and the viewing window and other parts will become covered with soot. If this situation is combined with firing with wet wood, the build-up of soot can become so thick and sticky that the sealing rope can, for example, become detached when the door is opened the next day.

Risk of explosion

⚠ After you add new fuel, it is very important that you do not leave the stove unattended until the wood is burning constantly. This will normally occur within 30 to 60 seconds. A risk of explosion can possibly arise if too much wood is placed in the stove. This may result in the production of large volumes of gas, and this gas can explode if the intake of primary and secondary air is insufficient.

It is an advantage always to leave some ash lying in the bottom of the combustion chamber. **Take care when emptying the ash pan, as cinders can continue to burn in the ash for long periods of time.**

Stove data table in accordance with EN 13240 testing.

Stove type	Nominal røggas temperatur c°	Smoke stub mm	Fuel volume kg	Draught min. mbar	Nominal output tested kW	Heat output kW	Distance to flammable materials in mm behind the stove at the sides	Distance to furnitures from the stove in mm	Stove weight kg
Scan-line 500	257	Ø150	1,6	0,12	5	5	150 400	900	113

The nominal output is the output to which the stove has been tested. The test was carried out with the secondary air supply almost 70% open.

Operational problems

The chimney must be swept at least once a year, we recommend the use of a NACS (national association of chimney sweeps) registered chimney sweep. In the event of smoke or malodorous fumes being produced, you must first check to see whether the chimney is blocked. The chimney must, of course, always provide the minimum draught necessary to ensure that it is possible to regulate the fire. Please note, however, that chimney draft is dependent on the weather conditions. In high winds, the draft can become so powerful that it may be necessary to fit a damper in the flue gas pipe to regulate the draft. When cleaning the chimney, soot and other deposits may come to fall on the smoke plate. In cases where the wood burns too quickly, this may be due to excessive chimney draught. You should also check to make sure that the door seal and ashpan seal is intact and correctly fitting. If the stove is generating too little heat, this may be because you are firing with wet wood. In this case, much of the heating energy is used to dry the wood, resulting in poor heating economics and an increased risk of soot deposits in the chimney.