



Less Effort, More Comfort: Discover the Benefits of Automated Pellet Stoves



Automated, Low Emissions, Sustainable and Cosy - Embrace the Future of Heating





Since 1970 Klover have worked passionately to build a brand that is like a four-leafed clover - something which makes us excited, a symbol of quality, innovation, and respect for the environment.

Something that we are lucky to find.



CONTENTS

2	About Klover
5	Product Features
8	Low CO2, low emissions
36	Pellets made in the UK
38	Technical spec
41	12 Trees program







Santo and Mario Muraro. R.I.P. Santo.

“ When you choose a Klover, you’re opting for much more than just a product. You’re embracing the craftsmanship and attention to detail that we invest in every stove. Our aim is to provide a genuine and sustainable warmth for your home, ensuring that every moment spent by a Klover is one of true comfort. It’s an honour for us to be a part of your home, helping to make it an even more inviting and cosy space.

**- Mario Muraro, owner, Klover**



Klover is based near Verona in Northern Italy and was started by Santo Muraro more than fifty years ago. Santo's son Mario and daughter Viviana have carried on their father's business and turned Klover into a highly respected international brand that exports throughout Europe and beyond. As it has grown, however, it has never lost Santo's legacy of total integrity when dealing with customers, partners and suppliers and an unwavering focus on the quality of their products.

Today the Klover manufacturing facility is a great deal larger, with state of the art testing facilities, warehouses, offices and showroom, but the skill and loyalty of their workforce remains the same as has their ability to produce beautifully designed, strongly made and highly efficient stoves.





## CONSISTENT QUALITY

At Klover, every step of the process - from design and prototyping to production, warehousing, and distribution - takes place in dedicated facilities in Northern Italy. This approach means that meticulous control over the quality and performance of all appliances can be maintained, ensuring they meet the high standards that customers expect.

Klover products are crafted with more than just an eye for design; they are built to provide reliable, day-in, day-out heating for your home. Components and materials are carefully chosen for their durability, ensuring that each Klover stands the test of time.

Commitment to quality is verified by ISO 9001:2015 and MCS factory certification, testament to rigorous quality management processes.

With over 100,000 Klovers installed in more than 30 countries, homeowners around the world trust Klover to keep their homes warm and comfortable, in style, season after season.

Klover products have been supplied in the UK for over 15 years by partnering with Firepower. Firepower are a renewable heating specialist, and holds stocks of Klover stoves and spares, provides support, and training for installers, all here in the UK.

Talk with your local supplier, or contact us at Firepower and discover how easy it is to upgrade to a Klover stove.

*Beautiful designs, automated, lower emissions than traditional stoves, less maintenance, less effort, cost-effective, energy-efficient, sustainable, and cosy*



*By constantly investing in research and development we create products that respect the environment, reduce emissions and optimise efficiency. We embrace a philosophy that looks to the future, without forgetting the roots of our Italian artisanal tradition.*

**- Gledis Hysenaj, innovation & development, Klover**

## CRUISE CONTROL

Stoves that adjust themselves for maximum efficiency.

Unlike traditional pellet stoves that feed pellets at a fixed rate, Klover's cruise control system continuously monitors the flame temperature. If the temperature increases, the system slightly reduces the fuel supply, and conversely, increases it when the temperature drops. This dynamic adjustment ensures that the fire remains efficient, consistent, and produces lower emissions.

As a result, pellets last longer. For example, in a test with an 11kW pellet stove, a 15kg bag of pellets lasted 9 hours and 5 minutes with cruise control, compared to just 7 hours and 20 minutes without it. This technology not only extends the life of your pellets but also enhances overall heating efficiency and comfort

TRADITIONAL CONTROL



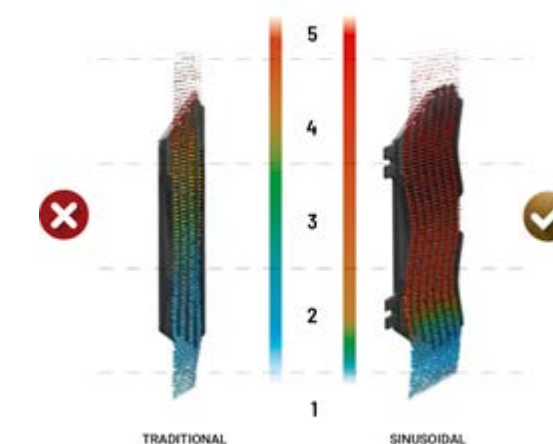
WITH KLOVER PELLET CRUISE CONTROL



## MAX CONVECTION & REDUCED NOISE

The Klover Soft 80, Soft 100, Super 7 and Super 9 feature innovative sinusoidal convection panels. Unlike traditional stoves with straight channels, these convection panels are curved, creating a sinuous pattern. This design slows the movement of air through the panels, allowing it to absorb more heat before exiting from the top.

This advanced convection method enhances heat distribution throughout the room, efficiently spreading warmth by natural convection. The result is a more consistent and comfortable heat and, without a convection fan, a whisper quiet stove.







# SELF CLEANING

Klover's innovative self-cleaning system ensures that your stove consistently delivers exceptional combustion, performance, and low emissions.

Before the stove is ignited and once it has cooled down, the base of the brazier - where the pellets are burned - rotates to clear away and collect any ash into the ashpan.

This cleaning process also occurs during extended use, maintaining peak performance. Additionally, if the stove is used for longer periods, it automatically re-lights itself afterwards, ensuring continuous warmth without requiring any intervention from you.

This advanced technology simplifies maintenance, enhances efficiency, and helps keep your home comfortably warm with minimal effort.

# REMOTE CONTROL

Each Klover stove features a control panel that allows you to easily turn the unit on or off, set desired temperatures, and program specific operating times.

For added convenience, you can connect Klover wood pellet appliances to a room thermostat, enabling automatic activation when the room temperature drops.

A remote control is also available, allowing you to manage settings from the comfort of your armchair. All non-boiler pellet stoves come Wi-Fi enabled as standard, enabling you to use the Klover Home app for iOS and Android.

This app lets you turn the stove on or off, adjust the power, and, if your stove includes a convection fan, control that as well.

Combined these features are simply less hassle - automated, cosy heating with less for you to do.



# CENTRAL HEATING

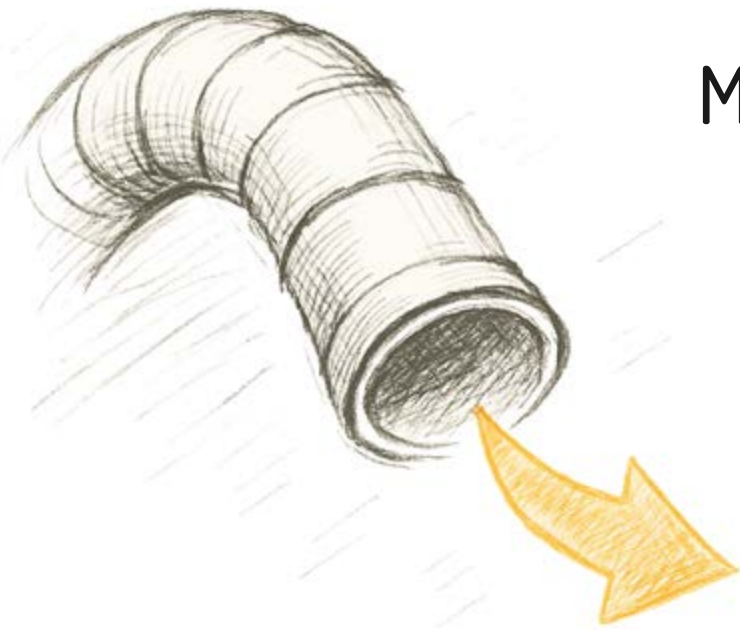
Klover also make a huge selection of central heating wood pellet boilers that can heat your whole house, and provide the hot water.

The chances are that if you see a wood pellet stove you like in this brochure, then there will be a similar central heating version. There are also the flagship Smart central heating pellet cooker models available, allowing you to upgrade from an oil-fired cooker.

The Boiler Upgrade Scheme grant scheme in England and Wales gives £5000 for qualifying installations of wood pellet boilers, and then the even more generous Warmer Homes scheme in Scotland which provides a payment, a interest-free loan, plus a rural-uplift. The

full materials and labour for supply and installation of wood pellet boiler models is also currently at 0% VAT.

To explore the options for central heating look in the combined expanded brochure, which also features the boiler models.



# MULTI AIR

Why settle for heating just one room when you can effortlessly extend comfort throughout your entire home?

With our Multi Air pellet stoves, simply connect air ducts from the stove to the rooms you wish to heat. Each room is independently controlled by its own fan inside the Klover.





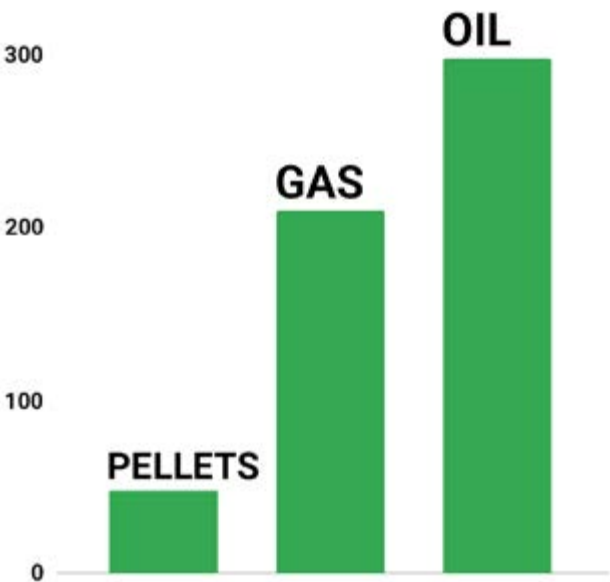
# LOW CARBON

Sustainably sourced biomass is a renewable and low-carbon option, with felled trees continuously replanted to ensure a steady supply.

For many rural homes with high heating demands and limited by a single-phase electricity supply, a pellet stove can be an ideal, and renewable, solution.

They can also be a great compliment to heat pump systems, helping to reduce the running costs on the coldest days, and at those times when the cost of electricity is high.

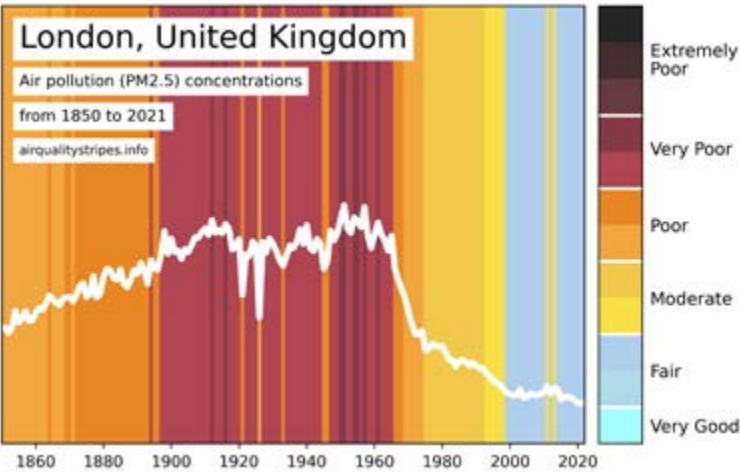
Grams CO2 per kWh



# LOW PARTICULATE EMISSIONS

Worried about emissions? Upgrade from an open fire or wood stove to keep your home warm, while reducing particulate emissions.

This graphic illustrates the overall improvement in air quality in London, which is similar across the UK. However, as our understanding of the health impacts of particulates has evolved, it has become clear that reducing emissions from wood heating even further is crucial.



To address this Ecodesign legislation, which applies across the UK and EU, has introduced strict upper limits for particulate emissions from wood stoves and wood pellet appliances, designed to reduce environmental impact and enhance air quality.

A government estimate of wood burning in London suggested that nearly 70% of those burning wood were doing so on open fires.

They give out such high levels of particulates that this means open fires could account for around 90% of the particulates from wood heating in London.

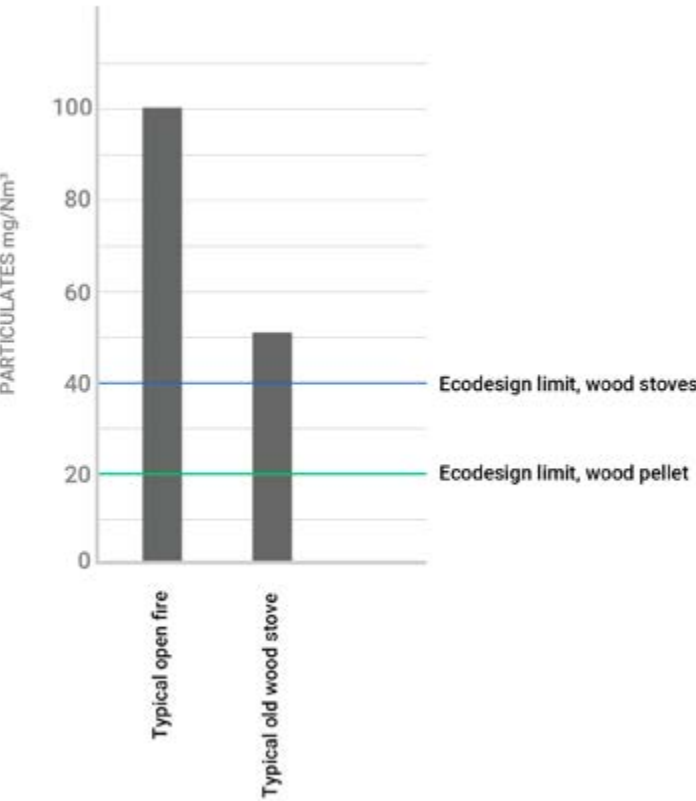
A modern wood stove will tend to produce 90%+ less particulates than an open fire, and 80%+ less than an old stove. A modern wood pellet stove will perform even better in comparison.

So upgrading open fires and old stoves is an easy way to very quickly reduce particulate emissions.

Unlike open fires, which have uncontrolled combustion, modern stoves operate at high temperatures with well-regulated combustion, even when turned down.

Wood pellet appliances, in particular, achieve even lower emissions due to their consistent, dry fuel and automated combustion systems that precisely control temperature and fuel-to-air ratios.

According to the Ecodesign standards, wood pellet appliances have a particulate emission limit of 20 mg/Nm<sup>3</sup>, which is half the limit for wood stoves at 40 mg/Nm<sup>3</sup>, and most Klover wood pellet stoves have lower levels than these.







## PELLET STOVES

Pellet stoves take far less time and attention than a woodburner.

They light themselves automatically, or at the press of a button, and constantly adjust themselves to provide maximum efficiency and minimum emissions.

Most importantly of all, they ensure a warm welcome when you step in from the cold.





Effortless comfort, timeless design

## SOFT 80 & SOFT 100

The Soft is a lovely wood pellet stove with a classical understated design which suits a wide range of settings. There's a great view of the flames through the tall window, it is available in bronze (as pictured), ivory, or matt black, with the cast iron top adding the final beautiful finishing touch.

The Soft 80 gives out up to 7.4kW of heat, the Soft 100 9.6kW. Extra heat transfer to the room is enhanced by internal curved air channels.



*The main thing for me was, over log burners, they are A more efficient, B they're more eco-friendly, and C, maintenance on them is fantastic. What I do, because they are fully programmable, is I just set it to come on when the room drops below a certain temperature. The pellet burner comes on in the background automatically.*



BRONZE



IVORY



MATT  
BLACK



# MISS AIR

Whilst the Miss Air has the look of a traditional UK stove, it is far more efficient, has lower emissions, and needs much less attention. Klover's tried and combustion and control systems keep it running automatically.

The bottom panel is available in a choice of three colours, black (as shown here), cream, red, or as a piece of real sandstone.



BORDEUX



IVORY



MATT  
BLACK



SOAPSTONE

Traditional design, modern convenience



# LADY AIR

The Lady Air is a traditional looking wood pellet stove suited for the larger room. Despite being able to throw out up to 10kW of heat the Lady Air can also turn down to run automatically, and efficiently, at 2.9kW, something a traditional woodburner would struggle to do.

The front and side panels are shown here in red, and can come in cream, black, or as real sandstone.



BORDEUX



IVORY



MATT  
BLACK



SOAPSTONE



Cosy heat at the click of a button

# DIVA AIR

Enjoy the inviting warmth of the Klover Diva Air, a sleek and stylish pellet stove designed for those with ample wall space who prefer a minimal footprint. Its slender profile accentuates the length of any room. Available in a wood or stone finish with an optional convection fan.

Simply turn it on with the remote, the on-board control panel, or app. The Diva Air requires only occasional cleaning and annual maintenance, leaving you free to enjoy your time in comfort.



CREAM  
STONE



SOAPSTONE



LIGHT OAK



OAK



DARK OAK



Slim by design, big on warmth





## SUPER 7 & SUPER 9

Experience the elegance of the Klover Super models, featuring graceful curved fronts and tall fire chambers that give a comforting view of the flames. The Super 7 and Super 9 stoves combine efficiency with automation, delivering heating outputs of up to 7.4kW and 9.6kW, making them ideal for larger spaces. Enjoy warmth and cosiness whilst embracing modern heating technology.

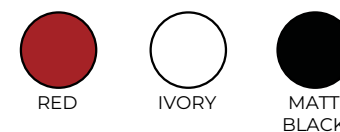


Powerful heating and the added comfort of automation



## DEA ECO

The Dea Eco range have the exceptional build quality and reliability that Klover pellet stoves are known for, all at a very reasonable price. This no-nonsense solution offers efficient and dependable pellet heating that's easy to install and simple to operate. There are 6kW and 8kW sizes to choose from.



“ Delighted with our new Klover  
- looks sleek, almost silent,  
fantastic heat throughout our home -  
we should have got it years ago!!!

Simple, efficient, and always ready





## WAVE 90 & WAVE 110

The Wave 90 and Wave 110 are lovely inset pellet stoves, designed to be built into a wall or installation chamber, they are available in steel, wood, or stone finish. With an adjustable and automated heat output of up to 10 kW, they are ideal for heating medium to large rooms, where you don't want to spend time manually tinkering with a fire.

Pellets are simply loaded through a top drawer, and for easy maintenance, the entire stove can just be pulled out on runners for full access. Enjoy a warm blend of style, efficiency, and practicality.



Warmth that fits perfectly in your home



## MONO

The Klover Mono is a cleanly-designed medium-sized inset wood pellet stove, perfect for integrating into a wall or column. The Mono forms a part of your room that provides cosy warmth and a living flame. The whole stove slides out on convenient runners for any regular servicing, and the frame can come in an elegant black or bronze finish.



Compact, clean, and full of heat



# WOOD STOVES

As you would expect Klover's woodburning stoves are designed to be robust and controllable, simple to use and with design refinements that make them a pleasure to live with.

Efficient, elegant, and built to last; discover Klover wood stoves







## VENUS 90

The Venus 90 woodburning stove gives a generous view of the flickering flames, and is available in three main models; with a log store below, on side legs, or a practical storage drawer below.

Each model comes as standard in black steel, with the option of a stunning natural stone finish for the two larger sizes. At just over 88% they are all highly efficient, and they also boast low particulate emissions, well below Ecodesign limits, marrying elegance with environmental responsibility.

Bring cosy warmth and beauty into your home.

Simple, efficient, and always ready





# STARBOX

Transform your home with Starbox inset woodburning stoves, providing reliable warmth and a cosy, living flame. These stoves are designed to form part of the fabric of your room and can be installed in a wall, fireplace recess, or custom installation chamber,.

Available in two sizes with outputs of 8.1 kW and 10.1 kW, Starbox stoves are engineered to burn efficiently, and they produce particulate emissions well below current legislative thresholds, ensuring you can enjoy both comfort and peace of mind.



The perfect fire, built into your wall





STAR 90



The Star 90 is an exceptional woodburning range cooker. Perfect for everyone from roast lovers to baking enthusiasts, its spacious stainless steel oven gives you ample capacity for your culinary creations. The cast iron hob provides a versatile temperatures for varied cooking, complemented by a durable, stain-resistant enamel coating.

Crafted with both robustness and elegance, the Star 90 shows the time, care, and expertise invested in its design, making it a helpful and cosy addition to any kitchen.



A Cooker and heater, all in one







## ALTEA

The Altea 110 is a central heating wood cooker designed to efficiently heat large homes, with the option to connect to an Energystore for storing excess heat for use when the cooker is not lit.

Our patented Sicuro Top technology ensures safe system separation, making the Altea easy and safe to link to both open vented and sealed systems. Hydraulic components like the pump and expansion vessel come pre-fitted, simplifying installation, and the integrated control panel allows for easy programming and control.

The cast iron hob has ample space for your culinary adventures, and of course you can roast and bake in the oven.

Efficient, reliable, and ready for any season



## DUAL AIR

The Dual Air stove offers the best of both worlds; a versatile heating solution which combines a traditional woodburning stove on one side, and an automated, programmable wood pellet stove on the other. This allows you to run each side separately or to run both simultaneously for an extra boost of warmth when it's really cold.

For those needing central heating options, we also offer the Dual and Bifire models.

Two ways to heat, one smart solution





# BELVEDERE 20 & 30

Similar to the wood pellet boiler versions, the Belvedere log boilers feature a classic design, available in a choice of plain steel or patterned ceramic side panels in various colours.

For added convenience, you can pair your log boiler with an Energystore to store excess heat, allowing you to heat your home even when the fire isn't burning.



Classic charm meets modern efficiency



# ECOWOOD

The Ecowood log boiler combines stylish design with an impressive heat output. The maximum output of 34.9 kW makes it ideal for larger homes.

For medium-sized and smaller homes the Ecowood can be paired with an Energystore thermal store, allowing you to capture and store heat, to then use over an extended period as needed.



Sustainable warmth for your whole home







# MADE IN THE UK

Did you know that over half of pellets used for heating are made here?

Pellets made in the UK are not only low carbon and renewable, they also support many jobs, contribute to the viability of forestry and timber production, provides stability of supply, and supports the economy.

Land Energy make the UK's favourite brand; Woodlets. They employ over 95 people and manufacture over 100,000 tonnes/yr. All the timber is sourced from forests within a 60-mile radius of their manufacturing site in South Ayrshire, Scotland.



Wood pellets are a renewable fuel source. While using them does release CO<sub>2</sub>, this carbon dioxide was absorbed by the trees during their growth and will be reabsorbed as new trees are planted.

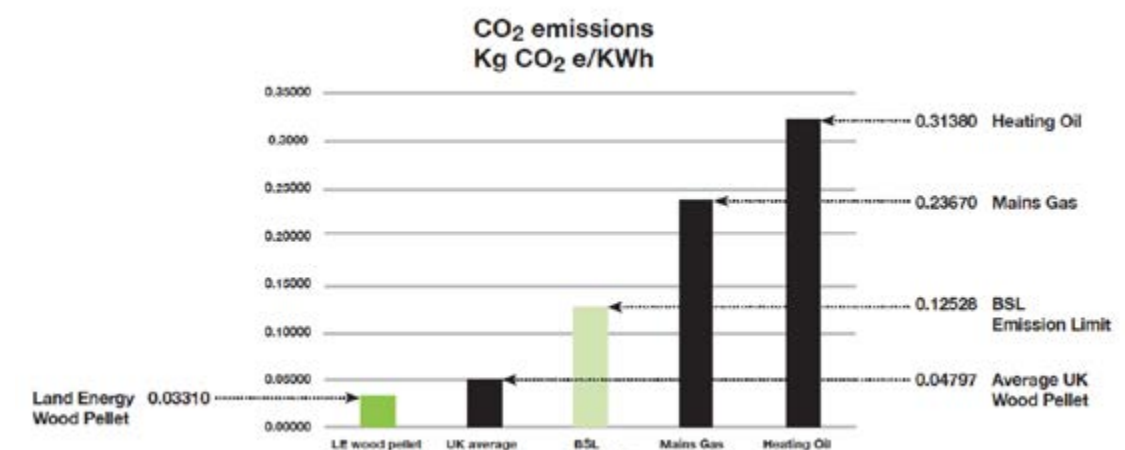
Land Energy takes pride in its “home-grown” approach, ensuring a stable supply, especially when imports fluctuate.

In the UK, strict regulations require a licence for tree felling, and all trees must be replanted within 12 to 24 months.

Land Energy uses timber rejected by sawmills and papermills. This makes full use of forest production, and helps heat many homes across the UK.

Land Energy generates 18.2 GWh per year from its own biomass boilers, which, combined with local sourcing and reduced delivery miles, results in significantly lower CO<sub>2</sub> emissions compared to average imported wood pellets.

Land Energy have kindly agreed that every Klover owner can enjoy exclusive discounts when ordering Woodlets wood pellets by entering a code. Just ask the company that supplies you with your Klover for the code.





# TECHNICAL SPECIFICATIONS

Multiair	Defra Exempt	MCS certified	PM, mg/m <sup>3</sup> , nominal, (reduced)	Flue diameter, mm	Efficiency, %, nominal, (reduced)	Fuel type	Fuel use, kg, nominal, (reduced)	Heat to room, kW, nominal, (reduced)	Heat to water, kW, nominal, (reduced)	Clearances, mm, side, rear, front	Weight, kg	Dimensions, mm, H, W, D
WOOD PELLET STOVES												
SOFT 80	-	Y	-	80	92,5 (94,5)	Wood pellets	1,66 (0,56)	7,4 (2,5)	-	200, 200, 800	145	1060, 480, 525
SOFT 100	-	-	-	80	92,5 (94,5)	Wood pellets	2,14 (0,56)	9,5 (2,2)	-	200, 200, 800	155	1118, 480, 525
MISS AIR	Y	-	-	80	91,4 (91,5)	Wood pellets	1,44 (0,78)	6,4 (3,5)	-	200, 200, 800	100	750, 500, 587
LADY AIR	Y	-	-	80	94,3 (95,3)	Wood pellets	2,23 (0,64)	10,1 (2,9)	-	200, 200, 800	160	785, 831, 551
DIVA AIR	-	-	Y	80	91,5 (90,0)	Wood pellets	2,0 (0,78)	8,9 (2,5)	-	200, 200, 800	125	1125, 900, 280
SUPER 7	-	Y	-	80	92,5 (94,6)	Wood pellets	1,66 (0,56)	7,4 (2,6)	-	200, 200, 800		1050, 480, 525
SUPER 9	-	-	-	80	92,5 (94,6)	Wood pellets	2,14 (0,56)	9,6 (2,6)	-	200, 200, 800		1180, 550, 560
DEA ECO 6	-	-	-	80	89,2 (91,9)	Wood pellets	1,27 (0,85)	5,6 (3,8)	-	500, 100, 800	67	870, 405, 520
DEA ECO 8	-	-	-	80	91,2 (90)	Wood pellets	1,5 (0,8)	6,8 (3,8)	-	500, 100, 800	90	950, 420, 550
WAVE 110	-	-	Y	80	94,3 (95,3)	Wood pellets	2,23 (0,64)	10,1 (2,9)	-	200, 200, 800	160	770, 830, 628
MONO	-	-	Y	80	95,2 (95,3)	Wood pellets	1,89 (0,64)	8,6 (2,9)	-	200, 200, 800	140	572, 721, 488

PM, mg/m <sup>3</sup> , nominal, (reduced)	Flue diameter, mm	Efficiency, %, nominal, (reduced)	Fuel type	Fuel use, kg, nominal, (reduced)	Heat to room, kW, nominal, (reduced)	Heat to water, kW, nominal, (reduced)	Clearances, mm, side, rear, front	Weight, kg	Dimensions, mm, H, W, D	
WOOD STOVES										
24,0	130	88,4	Logs	2,11	8,1	-	200, 200, 800	100	776, 715, 459	VENUS 90 CLASSIC
14,0	130	88,4	Logs	2,62	8,1	-	200, 200, 800	105	1154, 715, 459	VENUS 90
14,0	130	88,4	Logs	2,62	8,1	-	200, 200, 800	105	1154, 715, 459	VENUS 90 PLUS
14,0	130	88,7	Logs	2,62	10,1	-	200, 200, 800	105	1451, 715, 459	VENUS 110 OVEN
24,0	130	88,4	Logs	2,11	8,1	-	200, 200, 800	91	541, 713, 424	STARBOX 650
14,0	130	88,7	Logs	2,62	10,1	-	200, 200, 800	95	595, 763, 424	STARBOX 750
24,0	130	88,4	Logs	2,11	8,1	-	200, 200, 800	91	595, 763, 424	STARBOX UP
14	130	85,10	Logs	3,18	11,5	-	600, 70, 800	230	870, 900, 600	STAR 90
17.5	150	84 (87,7)	Logs	8 (3,84)	7,2 (6,5)	22,1 (8,2)	200, 200, 800	350	910, 1100, 600	ALTEA 110
14 (19) 7	150	90,0 (94,2) 85,6	Pellet and logs	2,14 (0,82) 2,37	9,3 (3,7) 8,7	-	200, 200, 800	330	1206, 900, 497	DUAL AIR (pellet values shown first, then logs where applicable)
16.9	150	80,4	Logs	6,40	9,5	13,1	200, 200, 800	260	1180, 600, 560	BELVEDERE 20 WOOD
11.2	180	74,3	Logs	9,27	3,3	27,3	200, 200, 800	345	1310, 690, 570	BELVEDERE 30 WOOD
11.2	180	85,1	Logs	9,27	3,3	25,7	200, 200, 800	310	1316, 663, 622	ECOWOOD 300



# 12 TREES PER KLOVER

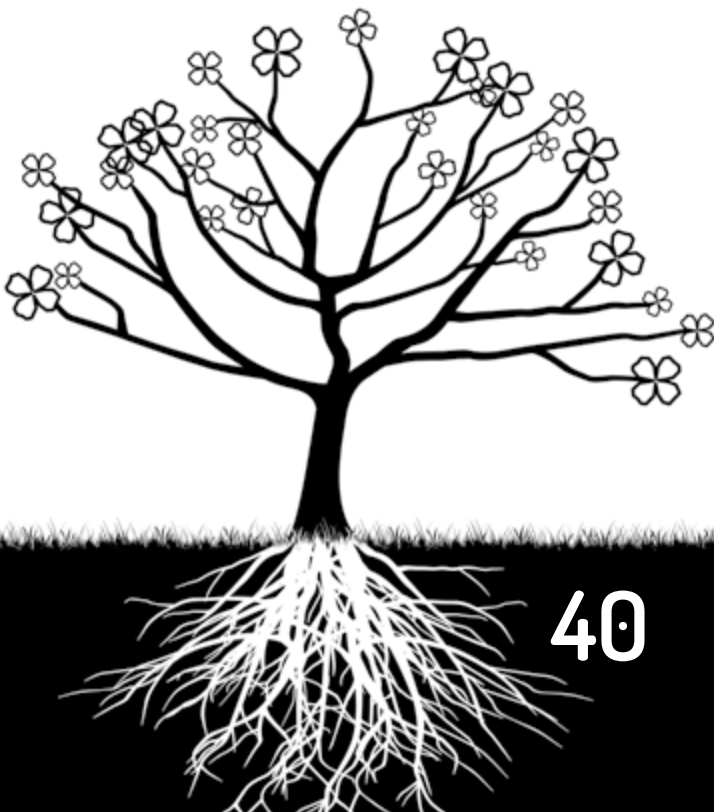


For every Klover we supply in the UK, 12 trees are planted through our partnerships with the International Tree Foundation and the Joliba Trust.

These charities take an integrated approach to environmental stewardship, working to improve ecosystems while providing sustainable livelihoods in areas of Africa most affected by climate change. The trees we plant offer numerous benefits, from stabilising soil and trapping water to providing shade and yielding valuable crops such as fruit, nuts, and timber.



The printed version of this brochure uses FSC certified paper, and the cover is laminated using a product which has the same appearance as the usual plastic lamination most printers use, yet is sustainable, biodegradable, and can enter the standard paper recycling process.



# MAKE THE SWITCH

Efficient and no hassle

Klover wood pellet stoves are far more energy efficient than traditional woodburners, meaning you get more heat out of every pound you spend on fuel. Automation, cruise control and self-cleaning means your stove is always keeping itself running optimally, and remote control lets you adjust the heat from the comfort of your armchair.

Lower Emissions

Klover stoves also produce less particulate emissions than traditional woodburners, and far less compared to an open fire, which can produce more than 90% more. Swap to a Klover and contribute to cleaner air and a healthier home environment.

Sustainability:

Choose a Klover and you're not just upgrading your home heating; you're making a sustainable choice. For every stove you buy we plant 12 trees. Wood pellets are a renewable fuel and low-carbon. Over half are made right here in the UK, including Woodlets. Klover owners get a complimentary 10% discount code to claim against full pallets of Woodlets.

A stylish addition to your home

Klover stoves aren't just about clever features and efficiency; they also enhance your home. With a wide range of sleek, contemporary designs, your Klover stove will be a standout feature, combining beauty, function, and the cosiness of a flickering flame.

Government Incentives:

You might also consider a central heating model, which are supported by the Boiler Upgrade Scheme and other government incentives, making now a perfect time to invest in a Klover boiler.

Talk with your local supplier, or contact us at Firepower to discover how easy it is to upgrade to a Klover. You will find contact details on the back cover.







Less Effort, More Comfort: Discover the  
New Era of Home Heating

Talk with your local supplier, or contact us at Firepower and discover how easy it is to upgrade  
to a Klover stove.

FIREPOWER, FLIGHTWAY,  
DUNKESWELL BUSINESS PARK,  
DUNKESWELL, DEVON  
EX14 4RD, UK

FIREPOWER.CO.UK  
SALES@FIREPOWER.CO.UK  
+44(0) 800 246 1260

2025 001